



# Combustible Gas Detection Products

# Sensor Electronics Corporation

---

Sensor Electronics Corporation (SEC) began in 1991 with the development of a highly intelligent gas detection system designed to reduce installation cost and provide superior gas sensing technology. The core personnel of our company have history in fire and gas detection over thirty years. The SEC gas detection products serve a wide range of industrial markets. Our vast user list identifies major companies that rely on Sensor Electronics to protect capital investments and monitor for a safe working environment for their workers. SEC has product certifications from Canadian Standards Association (CSA) Nationally Recognized Testing Laboratory.

Our ongoing research and development of new products along with special product applications, the ability to not only listen, but actually understand customers needs will continue to keep Sensor Electronics Corporation the innovative leader in the gas detection and fire protection industry.

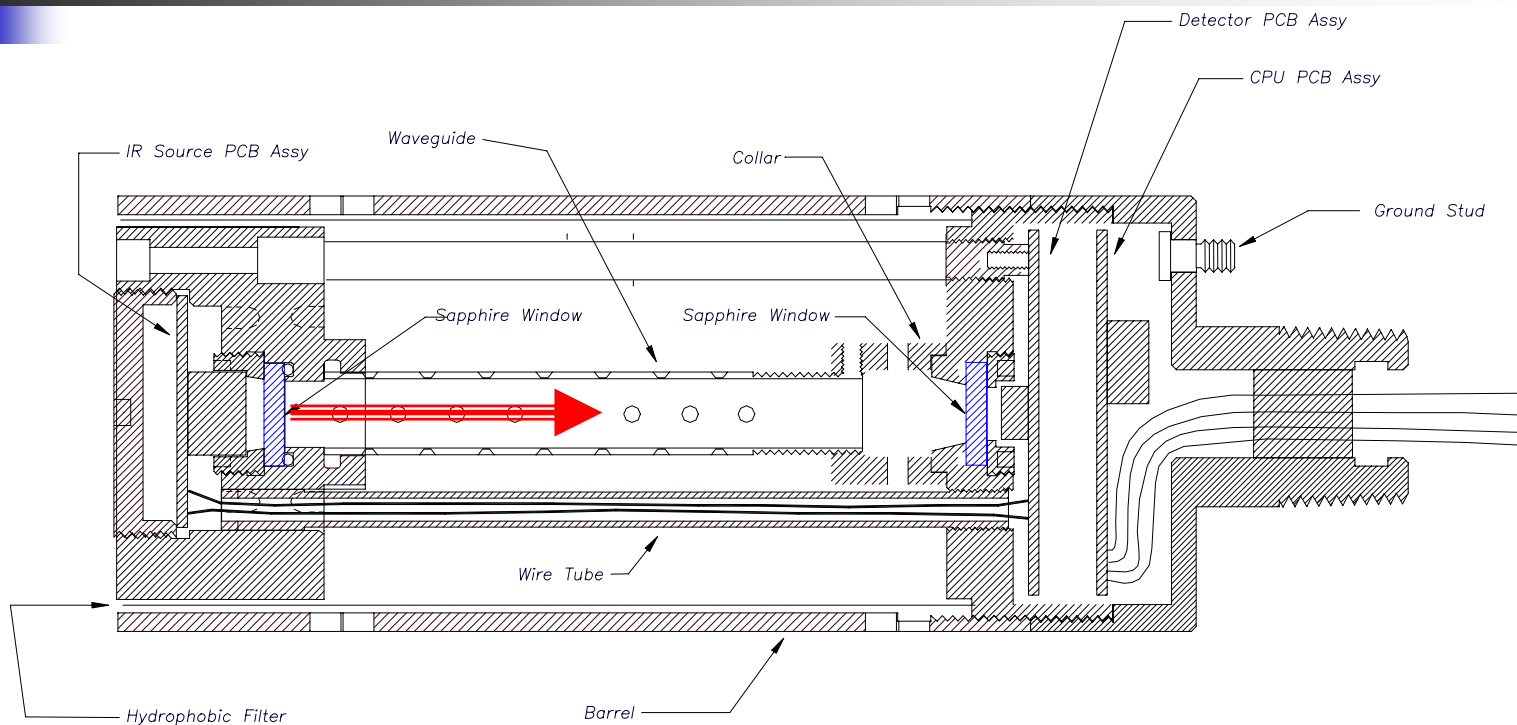
# SEC Millenium Infrared Gas Detector

## ❖ *Infrared Patented sensing technology*

- ❖ *Virtually maintenance free*
- ❖ *Low cost of ownership, over five years operating life*
- ❖ *Immune to poisoning and etching*
- ❖ *Explosion proof Class 1, Div. 1, Groups. B,C,D*
- ❖ *Performance Approved*
- ❖ *Explosion proof*
- ❖ *Compact & lightweight*
- ❖ *Fast response time*
- ❖ *Smart calibration*
- ❖ *Self-compensating optical bench*
- ❖ *No moving parts*
- ❖ *Heated optical chamber*
- ❖ *Low power consumption*
- ❖ *Operates in constant hydrocarbon background*
- ❖ *Operates in anaerobic atmospheres*
- ❖ *Fault indications for all failure states*
- ❖ *Routine calibrations are not required*
- ❖ *4 to 20 mA output*
- ❖ *0 to 100% LFL detection range*
- ❖ *0 to 100% Volume methane detection range*
- ❖ *Can be coupled with SEC transmitter for network applications*
- ❖ *Optional model for CO<sub>2</sub> (0-1% to 0-5% volume)*



# SEC Millenium Internal Diagram



❖ *Infrared Source*

❖ *Black Body*

- ❖ *No wear out mechanism*
- ❖ *Generates heat for optical chamber*

❖ *Straight optical path*

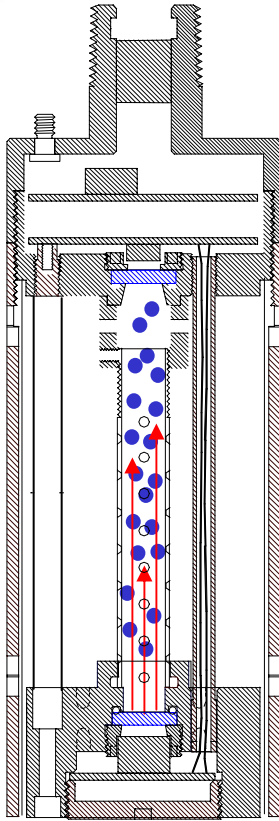
- ❖ *No Mirrors*
- ❖ *No Beam Splitters*
- ❖ *No Mechanical Choppers*

❖ *Dual Channel Detector*

❖ *Automatically Self Compensates for:*

- ❖ *Dirty optics*
- ❖ *Temperature*

## SEC IR Absorption Operation



- ❖ *Gas molecules enter gas sensor's optical chamber*
- ❖ *Gas molecules absorb infrared energy*
- ❖ *4-20 mA output increases*

# SEC 3100 "Universal" Transmitter

- ❖ *Explosion Proof*
- ❖ *Back lighted LCD Display*
- ❖ *Low Cost*
- ❖ *Plug and play toxic, oxygen and combustible gas sensors*
- ❖ *Self-check system*
- ❖ *Internal Real time clock*
- ❖ *4-20 mA output (sourced 3 wire)*
- ❖ *RS-485 Interface Modbus® (Isolated)*
- ❖ *Optional alarm and fault relays*
- ❖ *Non-intrusive programming interactive menus*
- ❖ *Non-intrusive calibration (magnetic switches)*
- ❖ *Removable, non-volatile, time stamped Data Card*
- ❖ *Optional IS barrier for toxic gas sensors*
- ❖ *Digital communication link to SEC 3000 and SEC Millenium Gas Detectors 2000 feet away*
- ❖ *Multi port housing for easy installation*



# Dual Microprocessors



The SEC 3100 uses two (2) microprocessors for added reliability.



# SEC 3100 Gas Detectors

ISOLATED RS-485  
MODBUS

ONE-PERSON  
CALIBRATION

EXPLOSION-PROOF

INTRINSICALLY SAFE  
SENSOR

REMOTE-MOUNT  
2000+ FEET



DATA LOGGING  
MEMORY CARD

RELAYS  
4-20mA OUTPUTS

INTERCHANGABLE  
TOXIC GAS SENSOR

STAND-ALONE  
GAS DETECTOR



# SEC 3100 Transmitter

Field Wiring Port (2 x 3/4")

- Power
- 4-20 mA
- RS485 (MODBUS)
- Alarm Relays

Magnetic Switch (3)

Alarm LED

Green OK

Yellow Low Alarm

Orange Mid Alarm

Red High Alarm

Mounting holes (2)

Gas Sensor Port (1 x 3/4")

SEC 3000

SEC Millenium

Memory Data  
Card Slot

LCD Display:

Real Time Status

Gas Type

Gas Concentration

Fault Identification

Range

ID Number

Memory Card Status

Interactive Menus

Calibration

Relay Programming

ID & Zone Number

Fault LED

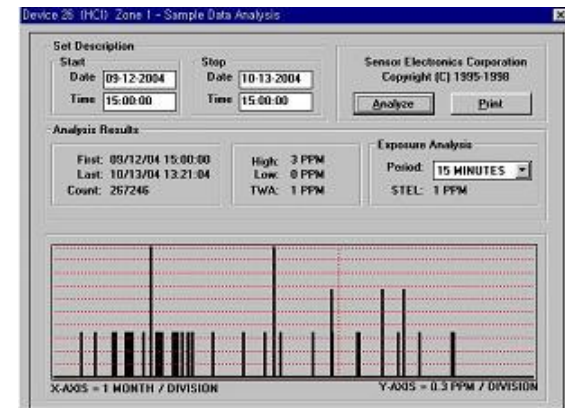
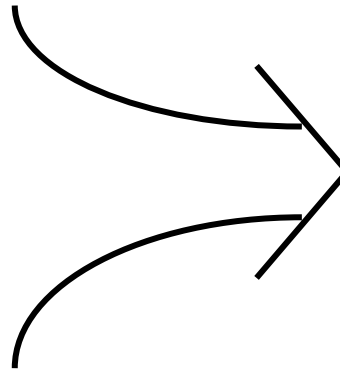
Green OK

Red Fault



# Data Logging

The SEC 3100 has an internal memory card for data logging. The memory card records any gas concentrations, alarms, faults, calibration date and sensor changes.



The information can read from the memory card and down loaded to a PC to generate a report. The memory card also provides data back up in case the main monitoring system fails.

# SEC 3100 Combustible



The SEC 3100 can be mated to the SEC Millenium for detection of combustible hydrocarbon gases such as methane, propane, butane, hexane, isopropyl alcohol, diesel etc.



## Feature Summary

---

### SEC 3100

1. Explosion proof enclosures can be used in almost any location.
2. Gas sensors can be remotely mounted up to 2000 feet from SEC 3100.
3. Universal transmitter with “plug and play” type sensors.
4. Digital communication between gas sensor and SEC 3100 provides fast reliable communication.
5. Smart sensors provide operating parameters to “universal” SEC 3100.
6. Built in noise filters to reject RFI/EMI interferences.
7. Dual processors provide independent but interactive display and network communications.
8. Multiple outputs 4-20 mA, relays, RS485 provides the customer with a variety of installation options.
9. Self diagnostics provides internal self checks on hardware.



# User List

## Chemical

Ciba Giegy Corporation  
Dead Sea Works  
E.I. Dupont  
Elf Atochem  
ISK Biosciences  
LaRoche Chemical  
Makhteshim Chemical Works  
Mobil Oil  
Monsanto  
Morton Specialty Chemicals  
Pao An Fire Equipment  
Parsons Electric  
Quaker Chemical B.V.  
Rotem Amfert Chemicals

## Semiconductor

Advanced Circuits  
Cypress Semiconductors  
Intel  
LG  
Motorola  
Rosemount  
Samsung  
Shin Etsu Semiconductor  
SHQ Company

## Industrial

3M Company  
Aeromet  
AES Warrior Run  
Alliant Techsystems  
Chemithon  
Dunlop  
Ecogas Cryogenics  
Encon Services  
Federal Cartridge  
Federal Molding Company  
Fogel Commercial Refrigeration  
HazStor  
Johnson Controls  
Keeler Steel & Aluminum  
Mitsubishi Heavy Industries  
Onan Incorporated  
Polycell  
Sealed Air Corporation  
Sony Magnetic Tape  
State of Minnesota (Dept. of Health)  
Sunbelt Cement Balcones Plant  
Supernatant Cable Corporation  
U of M Mechanical Engineering Dept.  
University of Arkansas

## Gas Transmission

Keyspan Energy  
Calpine Power  
Hanover  
Maxus YPF  
North Carolina Natural Gas  
PSE&G Burlington Station  
Shamrock Turbines

## Transit

Anoka County Highway Department  
Colorado DOT (Eisenhower Tunnel)  
DART (Dallas Rapid Transit)  
Houston Metro Transit  
Long Island Railroad  
Minneapolis International Airport  
Pierce Transit  
State Farm Insurance

## Telecom

Nextel  
ATT

## Petrochemical

ARCO  
Arctic Fire & Safety  
Chevron  
Clark Refining  
Darien Chemical  
Diagnostic Chemicals  
Ibomatic S.A.  
PEMEX  
Petrobras  
Ultramar Refinery  
San Joaquin Refining  
Saudi ARAMCO  
Saudi ARAMCO Shell  
Technip  
China Oil Company  
Citizens Utilities Water Company  
City of Detroit  
City of Unalaska  
County of Sacramento  
Metropolitan Water District  
Monte Vista Water District  
NH Department of Water  
Onondaga County Water  
Southern California Water Co.

## Medical

Boston Scientific  
COSMED  
Davis & Geek  
Ethicon  
Tyco Healthcare  
Guidant  
Sterigenics  
Sterile Systems  
XOMED  
Steritech  
Midwest Sterilization  
PCS / CATS  
Sims Portex  
Sterilization Services of Tennessee  
Steris Isomedix  
Mentor  
Cook Group  
US Surgical  
Sterile Technologies  
Johnson & Johnson  
Parter Medical  
Baxter  
Sterichem